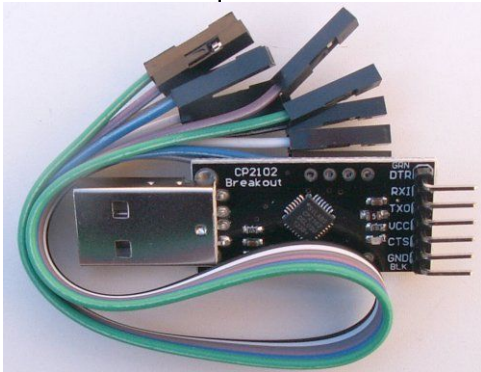


ByPic Quick Start

Thank you for purchasing this ByPic Product

Connecting and Getting Started

- 1) Plug in the USB to serial device and install the drivers if required.

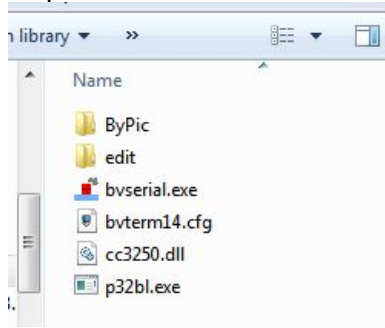


(Fig 1 Typical USB to serial device)

- 2) Download the IDE (BvSerial) from here:

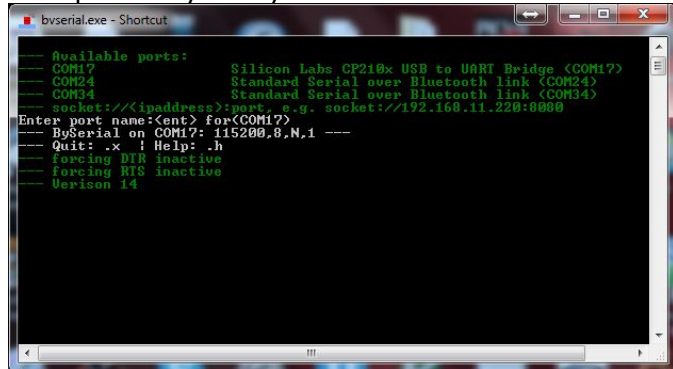
<http://www.bypic.co.uk/index.php/IDE>

- 3) Unzip and place in a directory, no install is required.



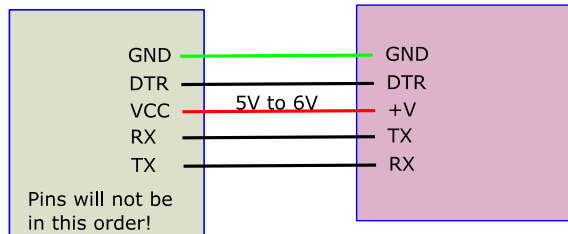
(Fig 2)

- 4) Double click on **bvserial.exe** and type in the com port for your system



(Fig 3 Baud rate 115200)

- 5) Connect the device to the USB to serial



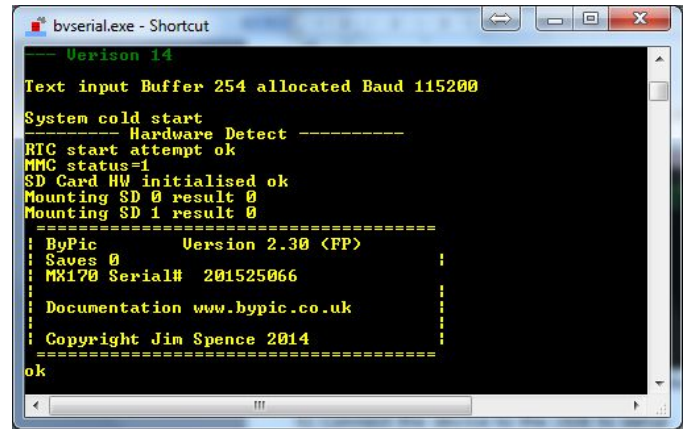
(Fig 4)

** NOTE the TX to RX and RX to TX. The pins on the USB to serial device will not be in the order shown.

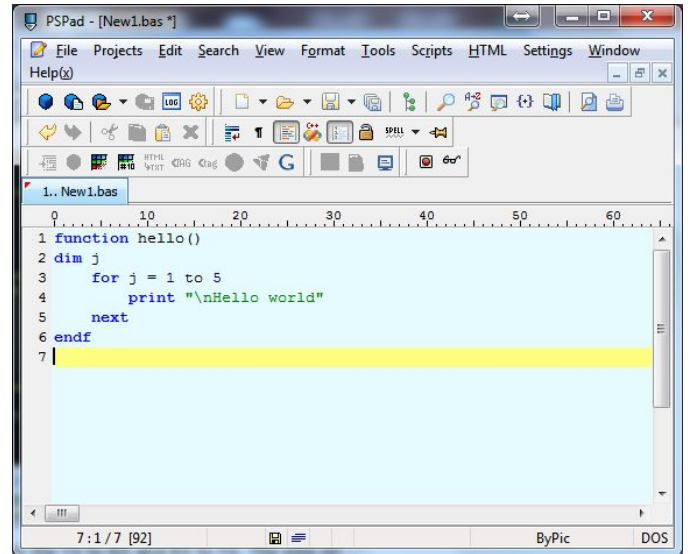
- 6) After connection you will get the sign on screen as shown in fig 5.

- 7) In the black BvSerial screen type **.edit** (dot edit) this will bring up the editor.

- 8) Type in the hello function as fig 6.

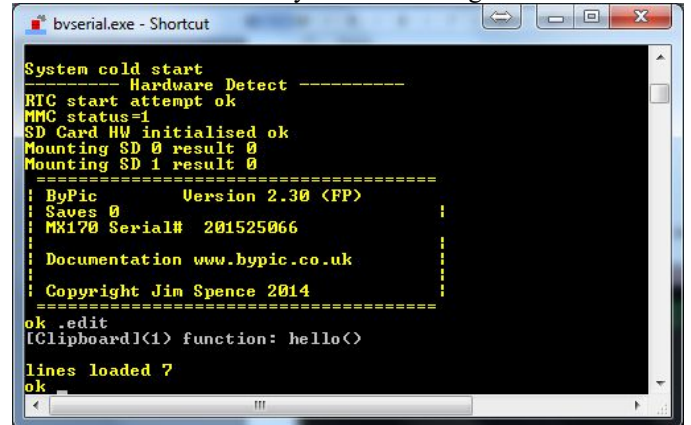


(Fig 5 sign on screen)



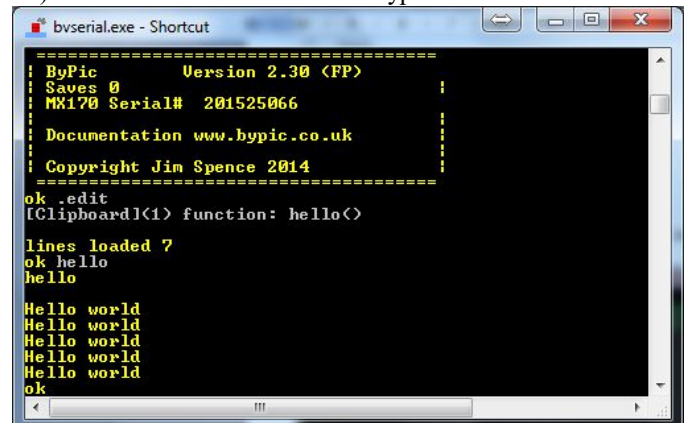
(Fig 6 Hello function in editor)

- 9) press F4 (function key) and this will transfer the function to BvSerial and thus to the ByPic device as fig 7



(Fig 7 hello function transferred)

- 10) In the black BvSerial window type hello



(Fig 8 running a function)

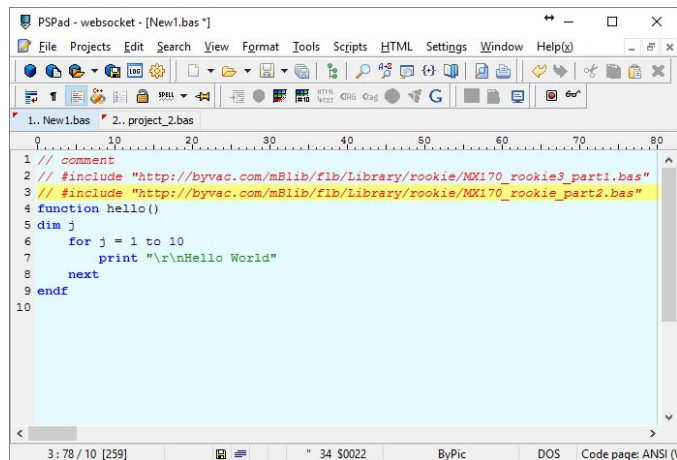
Include

ByPic is a 'vanilla' system and all enhancements are supplied by a user installed library of functions.

The standard libraries can be found here:

<http://www.bypic.co.uk/index.php/Library>

** The include mechanism is a function of BvSerial and NOT ByPic.

A screenshot of the PSPad IDE window titled "PSPad - websocket - [New1.bas *]". The window shows a BASIC program with the following code:

```
1 // comment
2 // #include "http://byvac.com/mBlib/flb/Library/rookie/NO170_rookie3_part1.bas"
3 // #include "http://byvac.com/mBlib/flb/Library/rookie/NO170_rookie_part2.bas"
4 function hello()
5 dim j
6 for j = 1 to 10
7     print "\r\nHello World"
8 next
9 endf
10
```

The status bar at the bottom indicates "3: 78 / 10 [259]", "34 \$0022", "ByPic", "DOS", and "Code page: ANSI (V)".

The include file format is:

```
// #include "filename"
```

More details can be found here

<http://www.bypic.co.uk/index.php/IDE>

See also the tutorial at www.bypic.co.uk

Resources

Bypic Website:

<http://www.bypic.co.uk>

ByPic devices hardware details:

http://www.byvac.com/index.php/Product_Index

(look for the device number)

Product index by number:

http://www.byvac.com/index.php/Product_Index

Forum:

<http://www.byvac.com/forum/>

Support

ByPic is free and so the main support is via the forum. When I can I will help but my time is limited, you can contact me here:

<http://www.byvac.com/index.php/Contact>

Jim Spence March 2015, Updated August 2016